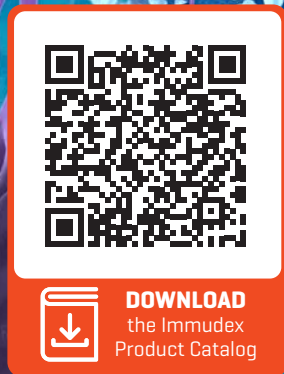
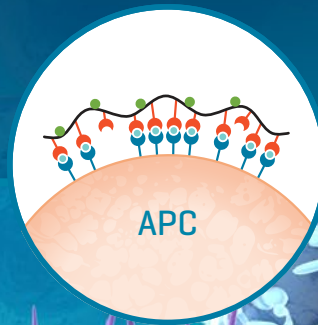
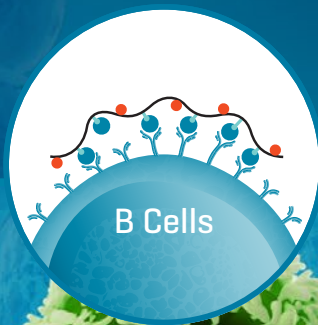
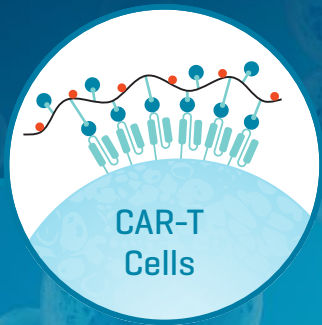
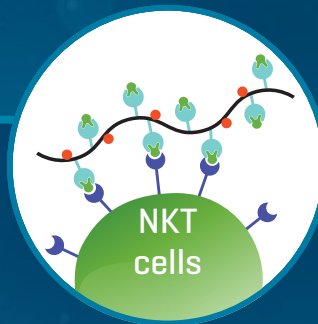
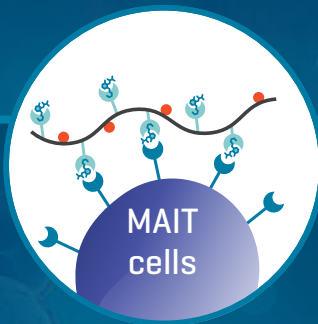
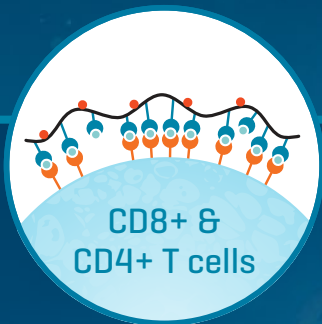


Investigate T, B and other Antigen-Specific Immune Cells



Immudex Products At a Glance

CD8⁺ and CD4⁺ T Cells

Ready-To-Use

MHC I and MHC II Dextramer®



GMP available

- Flow cytometry
- Detect and isolate antigen-specific T cells
- TCR validation
- In situ* staining

dCODE Dextramer®



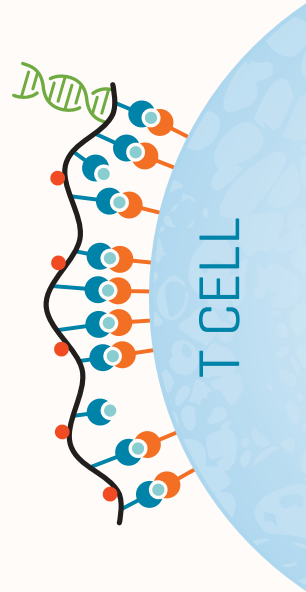
- Gold standard barcoded MHC multimers
- Antigen-specific T cell NGS/single-cell multi-omics
- Epitope discovery and neo-antigen screening
- TCR discovery and validation
- Specificity profiling

Ready-to-Use MHC Monomers



GMP available

- MHC I and II monomers
- T-cell stimulation
- TCR characterization and cross-reactivity screening
- Assess TCR:pMHC binding strength
- Development of TCR-like antibodies
- MHC multimer assembly



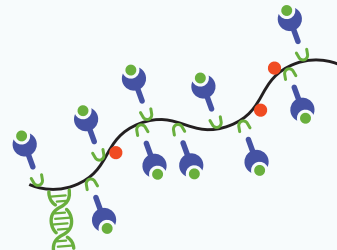
Loadable Solutions

U-Load Dextramer®



- Detect antigen-specific CD8⁺ and CD4⁺ T cells
- Loadable Dextramer® technology
- Flow cytometry

U-Load dCODE Dextramer®



- Antigen-specific T-cell monitoring with the power of multiplexing
- Loadable dCODE Dextramer® technology
- Epitope discovery and neo-antigen screening
- TCR discovery
- NGS/single-cell multi-omics [10x, RiO, HiT]

Peptide-Receptive MHC Monomers



- easYmers® MHC I and U-Load® MHC II monomers
- MHC multimer assembly
- Assess pMHC binding affinity

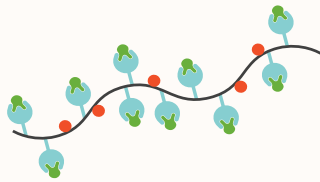
Don't find what you're looking for?

Ask us about Custom Solutions and Services

Non-Conventional T Cells

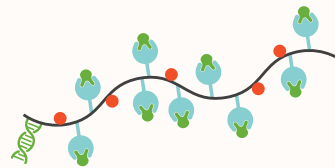
Ready-To-Use

CD1d Dextramer®



- Detect CD1d-restricted Natural Killer T cells
- Flow cytometry
- *In situ* staining

CD1d dCODE Dextramer®



- NKT cell monitoring with the power of multiplexing
- NGS/single-cell multi-omics [10x, RiO, HiT]

CD1d Monomers



- iNKT cell stimulation and enrichment

MR1 Dextramer®



- Detect MAIT cells
- Flow cytometry
- *In situ* staining

MR1 dCODE Dextramer®



- MAIT cell monitoring with the power of multiplexing
- NGS/single-cell multi-omics [10x, RiO, HiT]

MR1 Monomers



- MAIT cell stimulation and enrichment

HLA-E and HLA-G Dextramer®



- Detect antigen-specific NK and T cells
- Flow cytometry
- *In situ* staining

HLA-E and HLA-G dCODE Dextramer®



- NK cell monitoring with the power of multiplexing
- NGS/single-cell multi-omics [10x, RiO, HiT]

HLA-E and HLA-G Monomers

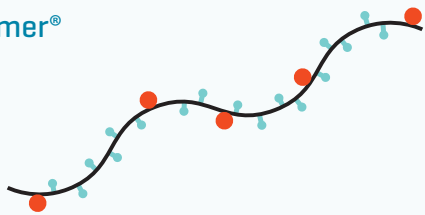


- NK cell stimulation and enrichment



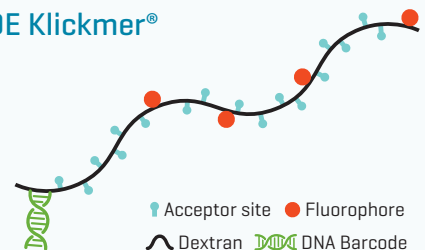
B Cells

Klickmer®



- Detect antigen-specific B-cells and more
- Build high-avidity multimers
- Attach your biotinylated molecule of choice
- Efficient protein-ligand interaction
- Flow cytometry

dCODE Klickmer®



- Antigen-specific B-cell monitoring with the power of multiplexing
- Loadable dCODE Klickmer® technology
- BCR sequencing
- Antibody discovery
- NGS/single-cell multi-omics [10x, RiO, HiT]



Antigen-Presenting Cells

TCR Dextramer®



- Detect antigen-presenting cells
- Validate and characterize TCRs
- Quality control of cancer vaccines
- Flow cytometry
- *In situ* staining

Soluble TCR Monomers

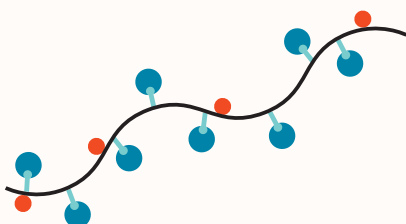


- Assess TCR:pMHC binding strength
- TCR cross-reactivity screening



CAR-T Cells

Dextramer® for CAR-T Detection



- Direct CAR detection
- Determine % of CAR positive cells
- Flow cytometry
- Single-cell multi-omics
- Custom CAR-T Detection for your target of choice

